

## Hunt Family Campus

### Campus History

The original two-story Helen Hunt Elementary School opened in 1902, with several subsequent building additions. The adjacent one-story school opened in 1966.

In May 2016, after 114 years of service, Colorado School District 11 voted to shutter the school due to declining enrollment.

The campus was sold in August 2016 to the Lane Foundation, now Legacy Institute, who committed to renovate and convert it into a nonprofit campus that would benefit the Hillside neighborhood.



TDG Architecture

In December 2017, the renovated newer building re-opened as a nonprofit neighborhood hub. In 2022, Catholic Charities purchased the campus, and began work to renovate the two-story, 1902 building into 24 apartments for homeless families. Together, the two buildings form the Helen Hunt Campus.

### Site Plan

**The Helen Hunt Nonprofit Campus is comprised of 2.8 acres and includes:**

- The one-story building that was remodeled by the Legacy Institute to become the nonprofit campus. Current tenants are Catholic Charities Family Connections, Catholic Charities Counseling Services, CPCD Headstart, Peak Parent, Haseya, and Hillside Connection.
- The 24-unit apartment building for homeless families
- Several parking areas
- A large playground that was designed by Hillside residents
- Switchback Coffee Roasters

# The Transformation: Classroom to Housing

## Hunt Family Campus



**Before: Classroom**



**After: Family Apartment**

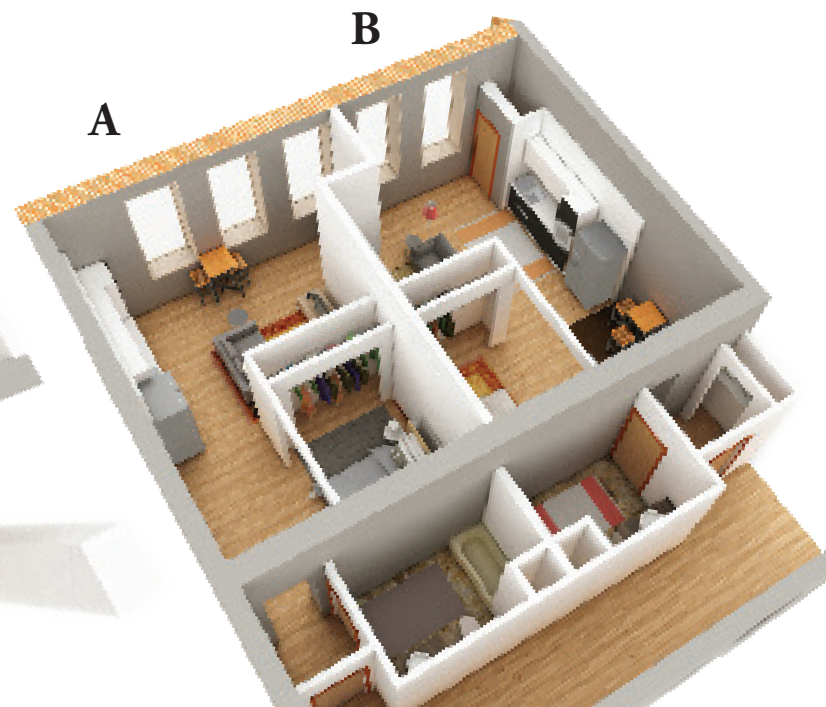
---

### One-Bedroom Unit



### Studio Units

Two studios can be linked to form one 2-bedroom apartment as needed.





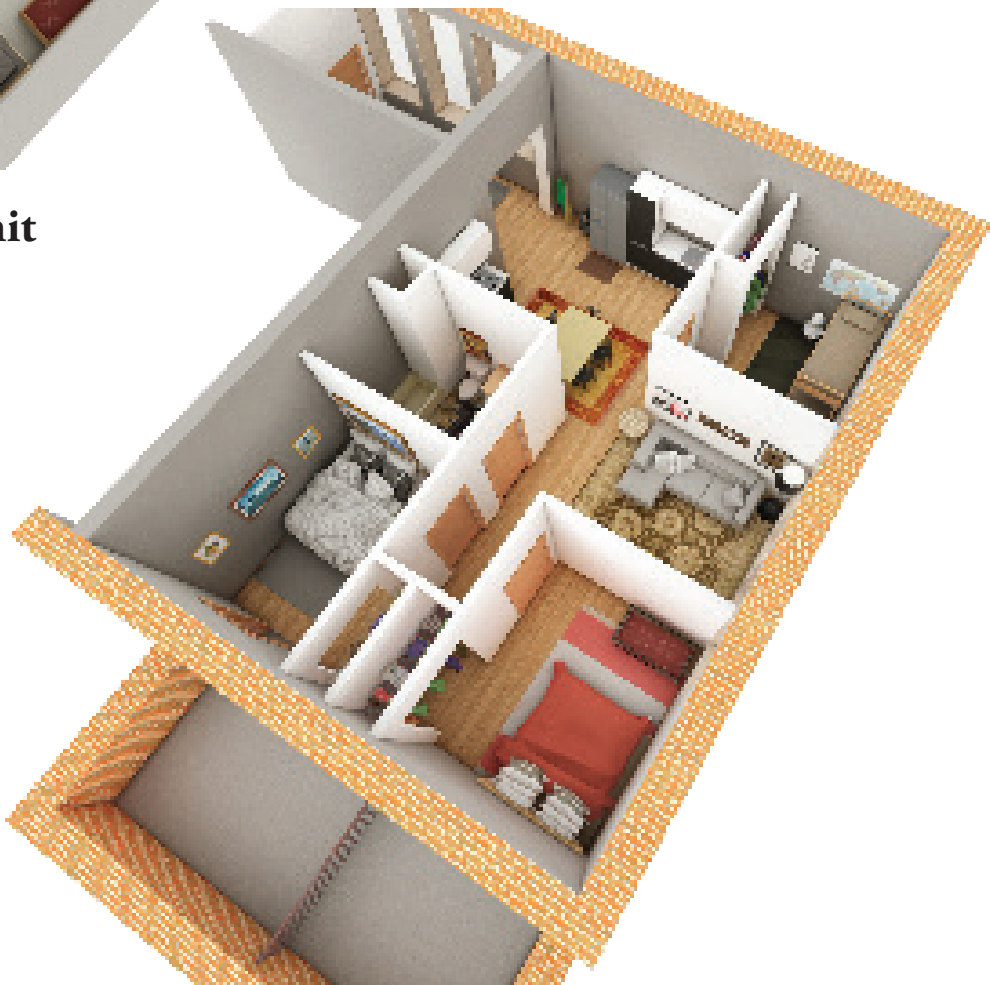
## Two & Three-Bedroom Units

# Hunt Family Campus

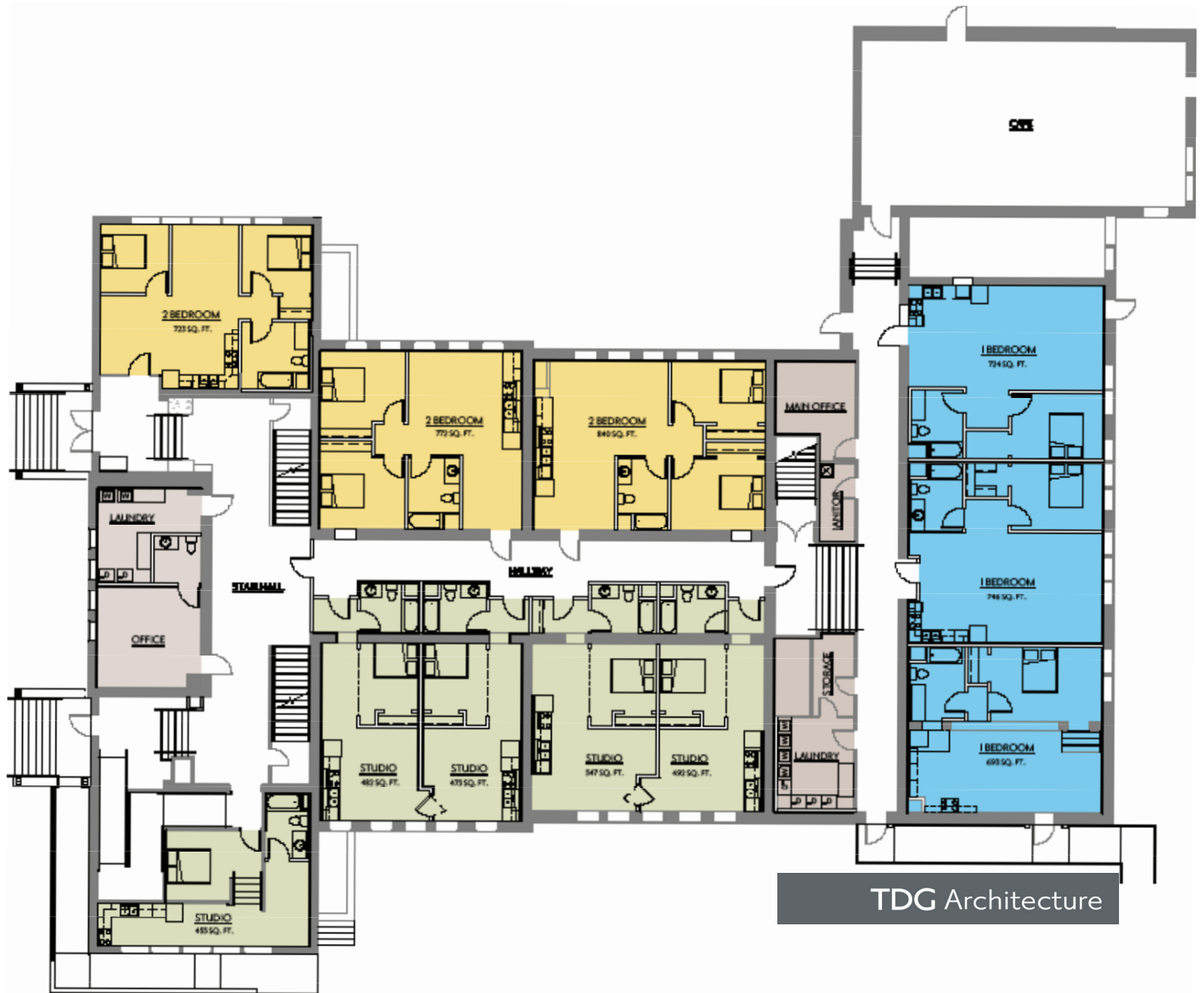


**Two-Bedroom Unit**

**Three-Bedroom Unit**



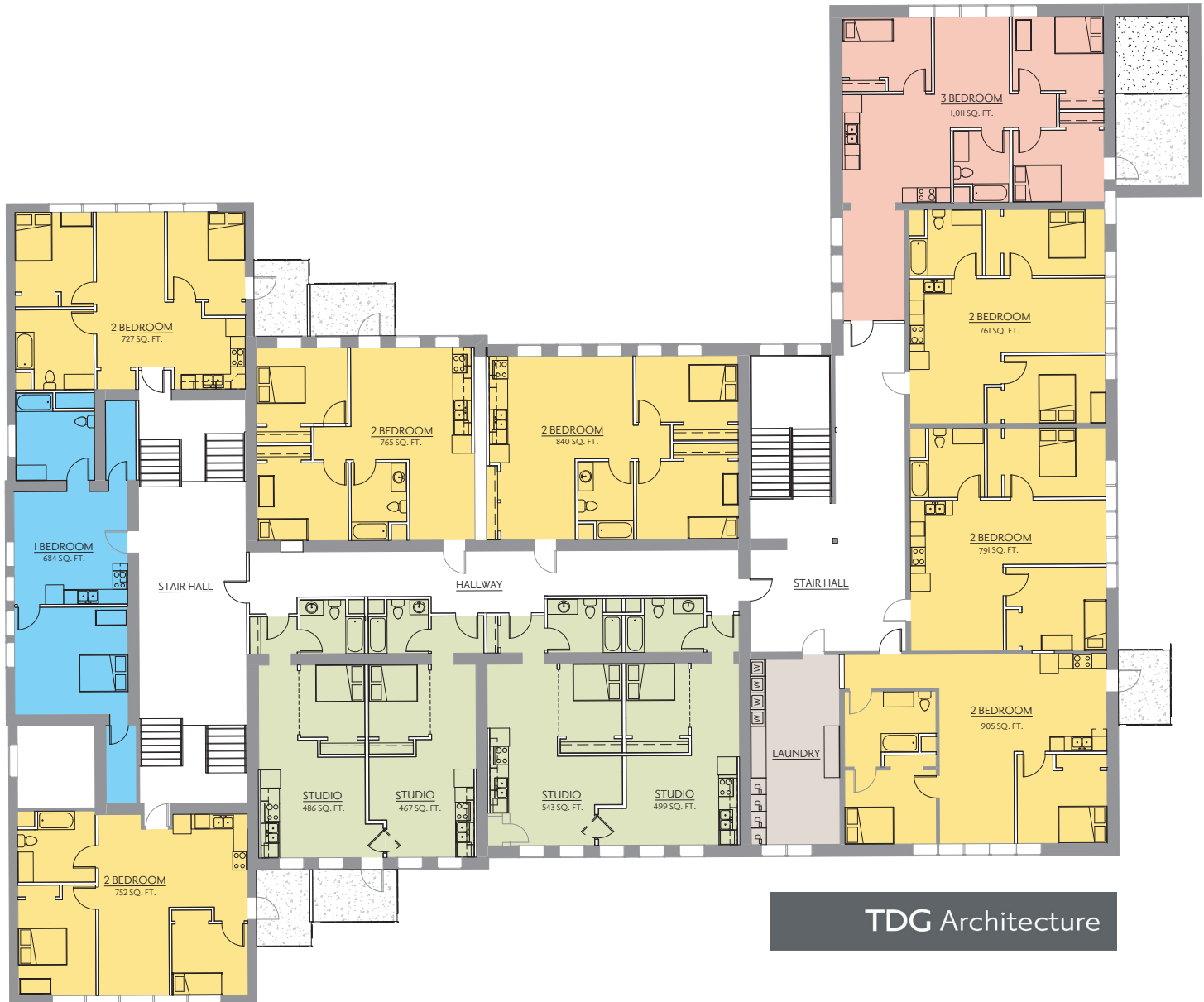
# Hunt Family Campus



The original two-story building will be renovated to accommodate  
11 Transitional Housing Units on the first floor

## Floorplan - Second Floor

# Hunt Family Campus



**The original two story building will be renovated to accommodate  
13 Transitional Housing Units on the second floor**

- |   |   |
|---|---|
| ■ 4 Studio Apt. - avg. 495 sq. ft.      | ■ 7 Two-Bedroom Apt. - avg. 792 sq. ft. |
| ■ 1 One-Bedroom Apt. - avg. 711 sq. ft. | ■ 1 Three-Bedroom Apt. - 1,011 sq. ft.  |
| ■ Common Laundry, Office, Storage       |   |