

## Hunt Family Campus

### Campus History

The original two-story Helen Hunt Elementary School opened in 1902, with several subsequent building additions. The adjacent one-story school opened in 1966.

In May 2016, after 114 years of service, Colorado School District 11 voted to shutter the school due to declining enrollment.

The campus was sold in August 2016 to the Lane Foundation, now Legacy Institute, who committed to renovate and convert it into a nonprofit campus that would benefit the Hillside neighborhood.



TDG Architecture

In December 2017, the renovated newer building re-opened as a nonprofit neighborhood hub. The original tenants included Catholic Charities, CPCD Headstart, and Colorado Springs Food Rescue. Other community-based nonprofits, including Hillside Connection and the Colorado Trust, are currently occupants in the original building. Together, the two buildings form the Helen Hunt Campus.

### Site Plan

**The Helen Hunt Nonprofit Campus is comprised of 2.8 acres and includes:**

- The original two-story brick building, currently houses several nonprofits in four classrooms, and Switchback Coffee Roasters - a for profit corporation
- A one-story building that was remodeled by the Legacy Institute to become the nonprofit campus. Current providers are: Catholic Charities Family Connections, CPCD Headstart, Penrose-St. Francis Faith Community Nurse, Peak Parent, and the Shandy Clinic - a for profit children's therapy center
- Several parking areas and a large playground that was designed by Hillside residents
- Food to Power - formally known as Colorado Springs Food Rescue - has moved but is located nearby, providing access to food at no-cost

# The Transformation: Classroom to Housing

## Hunt Family Campus



**Before: Classroom**

**After: Family Apartment**



**One-Bedroom Unit**

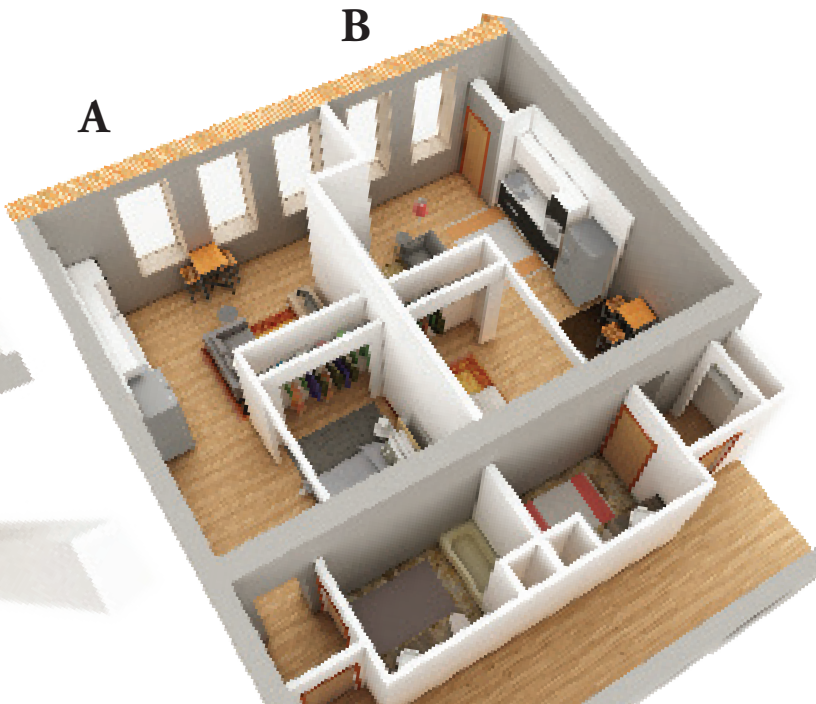
**Studio Units**

Two studios can be linked to form one 2-bedroom apartment as needed.



**A**

**B**



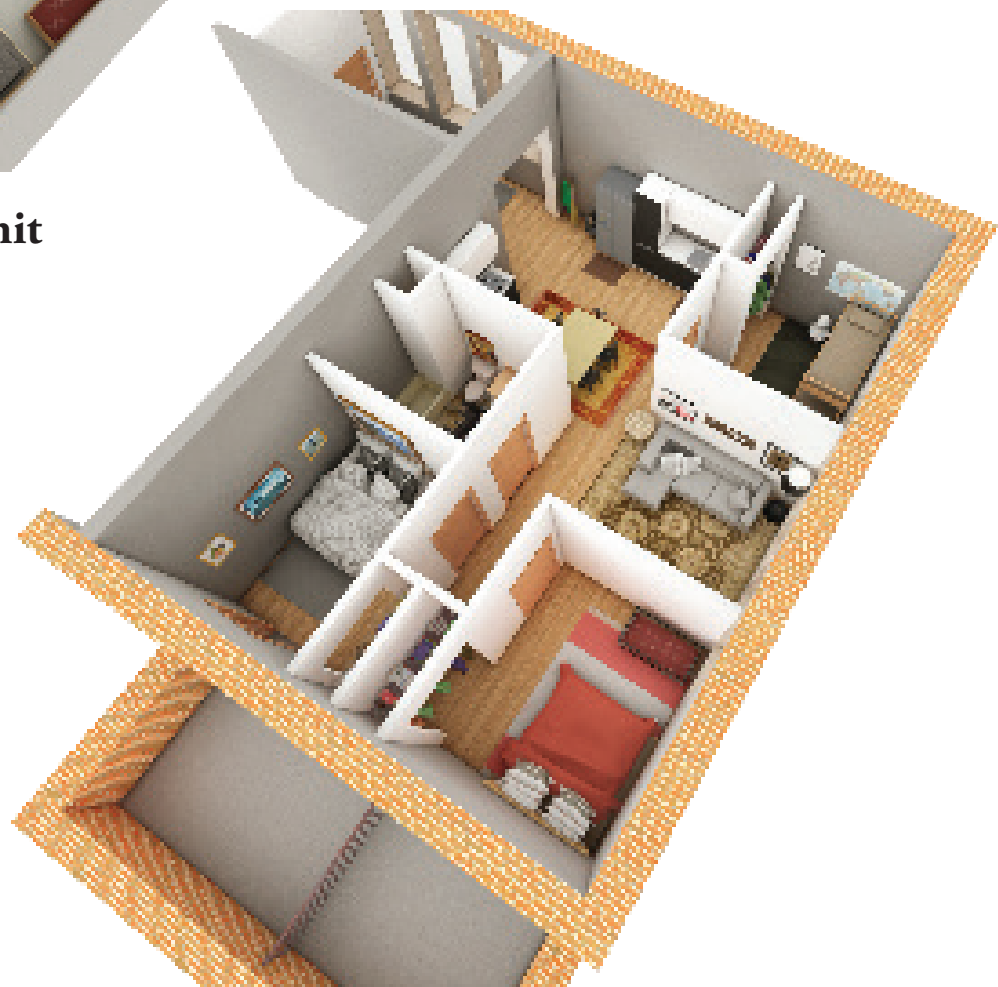
## Two & Three-Bedroom Units

# Hunt Family Campus

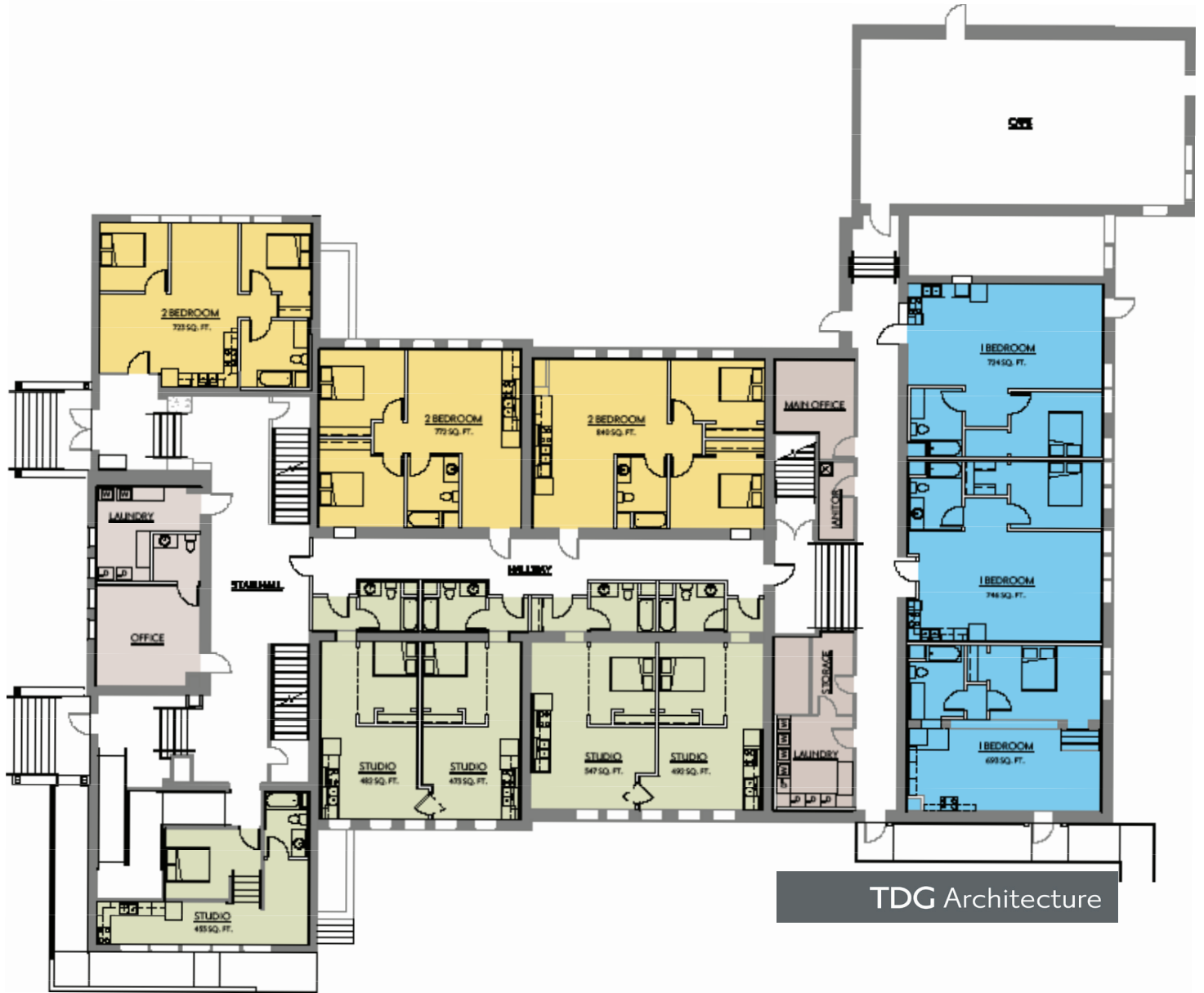


**Two-Bedroom Unit**

**Three-Bedroom Unit**



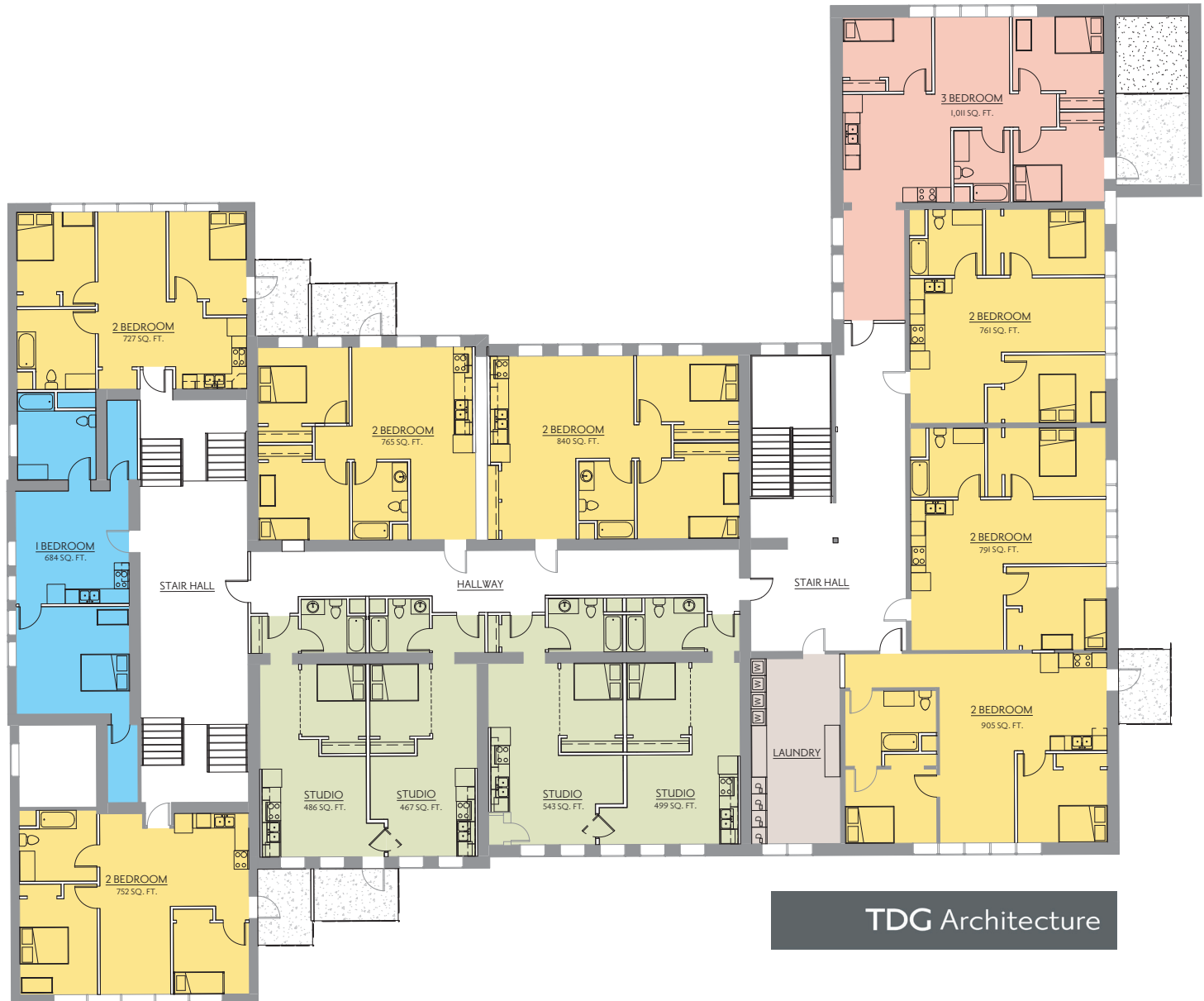
## Hunt Family Campus



The original two-story building will be renovated to accommodate  
11 Transitional Housing Units on the first floor

- 5 Studio Apt. - avg. 495 sq.ft.
- 3 Two-Bedroom Apt. - avg. 792 sq. ft.
- 3 One-Bedroom Apt. - avg. 711 sq. ft.
- Common Laundry, Office, Storage

## Hunt Family Campus



**The original two story building will be renovated to accommodate  
13 Transitional Housing Units on the second floor**

- 4 Studio Apt. - avg. 495 sq. ft.
- 7 Two-Bedroom Apt. - avg. 792 sq. ft.
- 1 One-Bedroom Apt. - avg. 711 sq. ft.
- 1 Three-Bedroom Apt. - 1,011 sq. ft.
- Common Laundry, Office, Storage